

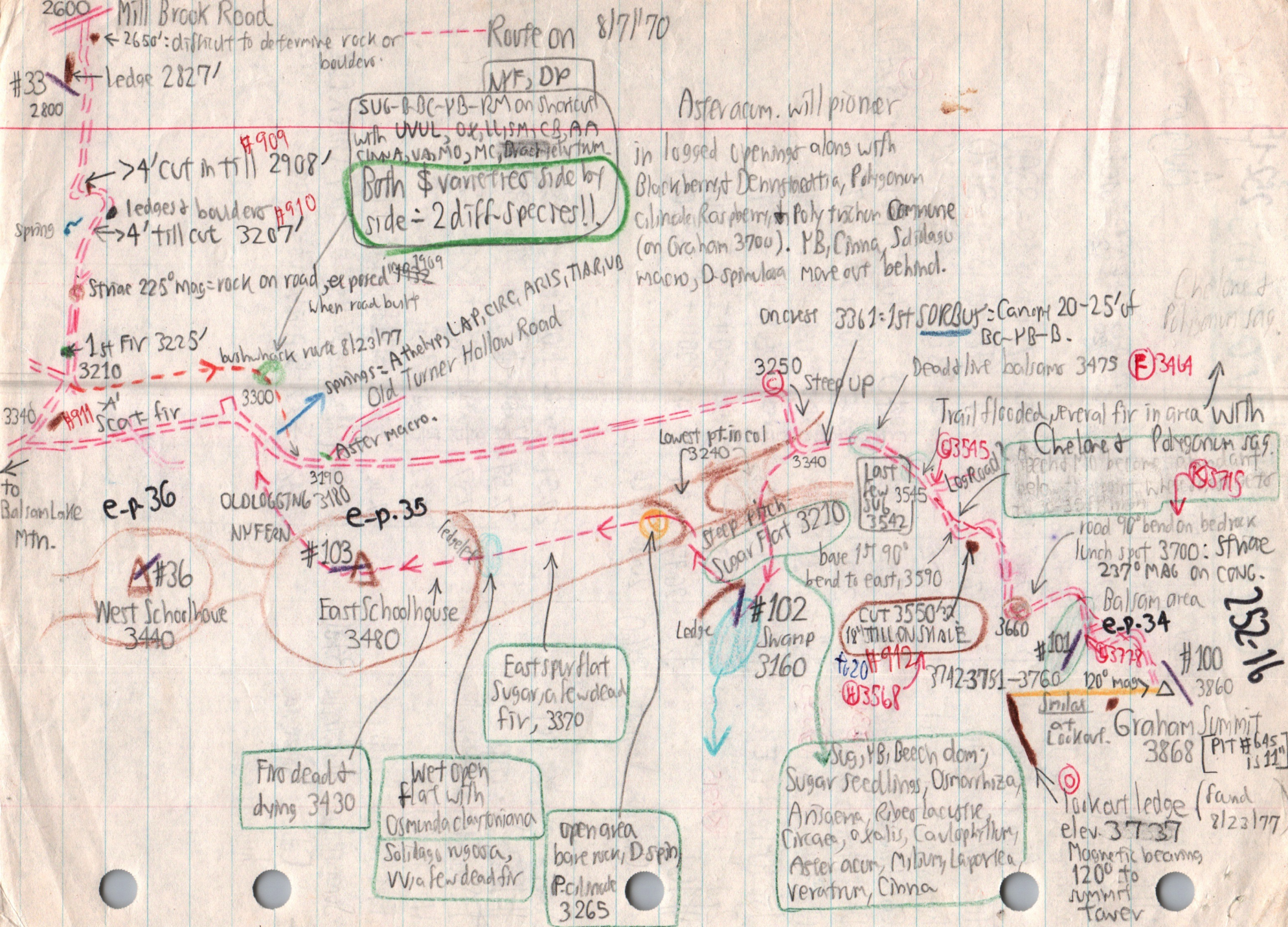
# Graham Elevations <sup>252-15</sup>

1970  
August 7

	ELEV.	UP	DOWN	
Mill Brook Rd	2600	28.27	—	
Shortcut to Graham Rd.		27.55	27.52	$27.12 - 28.27 = -0.85$   $0.72 / 0.85$ $3320 - 2600 = 720$   of 720 = $610 + 2600 = 3210$
Graham-B. Lake Junc.	3340	27.42	27.40	
● Road bends down to E	↑	27.46	27.46	$\frac{4}{56} \times 520 = 37$ ft below 3340 = 3300
Turner Hollow Rd. Junc.		27.58	—	$\frac{16}{56} \times 520 = 148$ ft below 3340 = 3190
Base steep jog into col.		27.52	—	$\frac{10}{56} \times 520 = 93$ ft below 3340 = 3250
Road Col: Graham to Schoolhouse		27.42	27.41	3340 [Lowest pt. in col is 3240]
Dead & live balsams (B) 3414		27.28	—	$\frac{14}{56} \times 520 = 130$ ft. + 3340 = 3475
Old road to E, flat (B) 3545		27.20	27.20	$\frac{22}{56} \times 520 = 205$ ft + " = 3545
1st 90° bend to E, base		27.15	27.18	$\frac{27}{56} \times 520 = 251$ ft + " = 3590
2nd " " " " (lunch)		27.03	—	$\frac{31}{56} \times 520 = 360$ ft + " = 3700
#101		26.97	26.97	$\frac{45}{56} \times 520 = 420$ ft + " = 3760
● Graham Summit	3860	26.86	26.86	
Sugar flat below col		<del>27</del>	27.54	$\frac{12}{56} \times 520 = 112$ ft below 3320 = 3210
#102 Swamp			27.59	$\frac{17}{56} \times 520 = 158$ ft below 3320 = 3160
E Spur flat on E Schoolhouse			27.37	$\frac{5}{56} \times 520 = 46$ ft + 3320 = 3370
Wet flat, E spur			27.32	$\frac{10}{56} \times 520 = 97$ ft. + 3320 = 3420
Firs (last) on Schoolhouse			27.30	$\frac{12}{56} \times 520 = 111$ ft + 3320 = 3430
Summit East Schoolhouse	3480		27.24	$[\frac{18}{56} \times 520 = 167$ ft + 3320 = 3487 CHECK O.K.]
● Col ridge open area, highest sugar			27.48	$\frac{6}{56} \times 520 = 56$ ft below 3320 = 3265

$3860 - 3320 = 540$   
 $27.12 - 26.86 = 0.56$

2695



Route on 8/7/70

Asteracum. will pioneer

in logged openings along with Blackberry, Denningtoetria, Polygonum, C. lineale, Raspberry, Polytrichum commune (on Graham 3700). YB, Cinna, Solidago macro, D. spinulosa more out behind.

NYF, DP  
 SUG-B-BC-YB-RM on short cut with UVUL, OR, U, SM, CB, AA, CINNA, VA, MO, MC, ~~Dracopis~~  
 Both \$ varieties side by side = 2 diff. species!!

on crest 3361 = 1st SORBUS = canopy 20-25' of BC-YB-B.

Dead live balsams 3475 (E) 3414

Trail flooded several fir in area with Chelone & Polygonum spp. (2nd MI before road cut) (E) 3715

road 90° bend on bedrock lunch spot 3700: S. swae 237° MAG on CONG.

Balsam area

e-p-34

#101 3778  
 #100 3860  
 120° mag

Graham Summit 3868 [PIT #645 1511]

lookout ledge (fand elev. 3737 8/23/77) Magnetic bearings 120° to summit Tower

152-16

2600 Mill Brook Road  
 ← 2650': difficult to determine rock or boulders.

#33 2800 Ledge 2827'

#909  
 → 4' cut in till 2908'  
 ledges & boulders #910  
 ← 4' till cut 3207'

Stnae 225° mag = rock on road, see post #912 when road built

← 1st fir 3225' 3210

bushy track route 8/23/77

spring = A. thebes, LAP, CIRC, ARIS, TIAR, YB  
 Old Turner Hollow Road

3340 SCOT fir 3300  
 Aster macro.

to Balsam Lake Mtn.

e-p-36

OLD LOGGING NYFERN

e-p-35

#36 West Schoolhouse 3440

#103 East Schoolhouse 3480

East spur flat Sugar, a few dead fir, 3370

Fir dead & dying 3430

Wet open flat with Osmunda claytoniana Solidago rugosa, W/a few dead fir

open area bare rock, D. spin, P. calmod 3265

steep pitch Sugar Flat 3210  
 base 1st 90° bend to east, 3590

Ledge #102 Swamp 3160

last few SUG 3545 3542

CUT 3550' 18" MILL ON STALE fir 20' #912 (E) 3568

Sug, YB, Beech dom; Sugar seedlings, Osmorhiza, Anisodora, Ribes lacustre, Circaea, oxalis, Caulophyllum, Aster acun, Milium, Lycopodium, Veratrum, Cinna

similar at Lookout.